

sintesi[®]
New living spaces

SINTESI PERGOLA

Technique and elegance melt together.

Frama's new pergola: the product of minimal design and efficiency

Airy, solid. **Sintesi pergola**: a compendium of technique, handiness, style and design - by Frama, of course.

A **totally innovative** product boasting precise and reliable operation, with overall width and height folding dimensions **reduced by minimum 20% compared to current market standards**. Sintesi matches a svelte silhouette with **heavy duty** fabric. The sliding mechanism is set within the guides span, and is hence concealed by the same when the canvas is **fully stretched**: aesthetics perfectly and discreetly blends into any setting, both contemporary and traditional, thanks to **minimum architectural and landscape impact**.

Sintesi is the **ideal solution** for both residential and commercial contexts and **broadens indoor space** by seamlessly linking it to new outdoor areas.

For those who appreciate beauty made handy: all operation mechanisms are protected, guaranteeing **low maintenance**. The **fully inspectable aluminium box** makes operations even easier and faster.

Sintesi is Frama's new **frontier of solar protection**.

Sintesi: space is all yours now.

 new italian design



Water runoff
class 2
Minimum gradient*

6°



Wind resistance
up to

100 km/h

* according to size

- Aesthetics perfectly and discreetly blends into any contemporary setting and traditional context thanks to minimum architectural and landscape impact and to the vast range of colours available on request.
- **Extremely clean** lines, with front and gutter in line with the columns.
- Svelte silhouette matched with heavy duty structure.
- **Fabric and profiles set within guides span** make it easy to install, even within four walls.
- Overall width folding dimensions **reduced by 20% compared to market standards.**
- Overall height folding dimensions **reduced by 25% compared to market standards.**

- Cover fabric in blackout PVC available in various colours, or in **Preconstraint PVC, in Soltis®, in acrylic or polyester fabric welded with the Adhesil® system, with even or uneven loose fabric.**
- **The sliding mechanism is set within the guides span** and is fully concealed by the same when the fabric is fully stretched.
- Standard **revolutionary** drip-proof edge.
- Extreme product **customisation** with decorative elements like tops, capitals and drains.
- Optional **screen-printing aluminium plate bearing the final customer's details** for highly customised and unique design
- **Separate single awnings for each opening:** to keep loads under control and thus making installation easier and quicker.
- Standard powder coated structure in **20 different colours.**

- **Powder coated profiles in the same colour as the fabric cover** made to order.
- **Columns can be placed** up to 30 cm back within structure depth.
- **Pre-assembled kits cut down installation time.**
- Structure and components made with top quality materials: aluminium and stainless steel (nylon free).
- **Standard protection treatment** for all components designed for saline environments.
- Four wheeled aluminium carriages for **precise and reliable operation.**
- Intermediate profiles set on carriages and within guides span for enhanced **mechanical performance.**

- **Compact** standard top cover made up of wall gasket, stretched PVC fabric and front aluminium profile.
- Fully **pre-assembled** motor-operation system concealed inside the box.
- Standard motorisation **electronic Somfy system featuring "IO" and RTS technology.** Fully transmitter-controlled.
- Optional combination with interior design awnings for internal false ceiling.
- Compatible with front and side vertical awnings Closer-Tec and Screen-Tec **for creating indoor space** to enjoy even in winter time.
- In the multi-opening version each opening is fitted with **an individually operated fabric.**

- **Full integration of LED strips on the profiles,** spotlights on the box and bi-directional lights on the columns for creating a unique and special atmosphere also at night.
- Remote control **point light and non-point light LEDs below the wind barriers,** with fully concealed cables and transformers.
- Wall-mount box **panel** fitted with fully concealed remote control **built-in spot LEDs.**
- **Columns fitted with** remote control **bi-directional spotlights,** fully concealed cables.
- **Hi-fi speakers,** fully concealed cables.
- Optional **side sliding or folding glass closings with sliding or folding windows.**
- Optional perimetral **screen shields,** self-standing or with low wall support, with customizable glazing (logo, writing).

Remote control systems and integrated technologies:



Applications

- Gardens
- Terraces
- Loggia extensions
- Shops
- Restaurants, bars, ice-cream parlours
- Beach venues

sintesi[®]
New living spaces





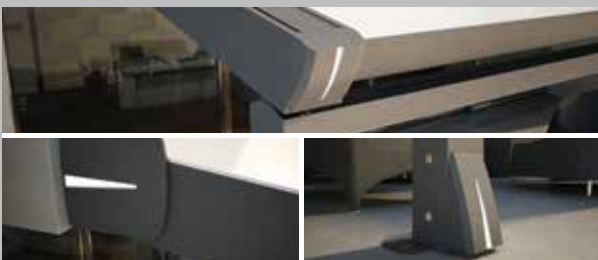
design and elegance



LEDs below the wind barriers and spotlights below the box.



Bi-directional spot-lights on columns



Customisable decorative elements



Optional profile colors matching with cover fabric



Speakers



Custom plate



WALL OR CEILING MOUNTED SINTESI



SELF-STANDING SINTESI SHADE
WITH 1 OR 2 OPENINGS



HANGING SINTESI AIR WITH ARCHES



HANGING SINTESI AIR WITH CABLES



MULTI-OPENING SELF-STANDING
SINTESI



SELF-STANDING SINTESI
CLOSE-UP VERSION

- **WALL OR CEILING MOUNT SINTESI**
unlimited openings with the modular system.
- **MULTI-OPENING SELF-STANDING SINTESI**
optional 2-slopes version.
- **SELF-STANDING SINTESI CLOSE-UP VERSION**
with upper panelling,
optional 2-slopes version
- **SELF-STANDING SINTESI SHADE**
with 1 or 2 openings.

- **HANGING SINTESI AIR IN 3 DIFFERENT VERSIONS**
 - hanging and supported by steel cables
 - hanging by steel tube
 - supported by curved tube.
- **SINTESI INSTALLED BETWEEN 2 WALLS**
without columns.
- **SINTESI INSTALLED IN EXISTING STRUCTURES**
to be fitted in an opening or supported.



customise your SINTESI

Available colours

All available colours are standard **and without any price increase applies**

9016	3005	CROMO GREY	9005
PERLA WHITE	COR - TEN	7016	BRUN 650 SABLÈ
1013	8019	7006	GRIS 150 SABLÈ
9006	8017	1019	NOIR 100 SABLÈ
9007	6009	6005	VERT 500 SABLÈ